

Figure 7: Bovine skin treatment with *B. polyfermenticus* GR 01 culture supernatant. Arrow indicates the outer epithelial root sheath, which disintegrated almost completely in the presence of culture supernatant. Sections of the root sheaths incubated in (A) Control, water-treated skin; (B) Treated skin with culture supernatant – 24 h incubation; (C) 36 h incubation; (D) 48 h incubation are shown. Incubation conditions: 37°C, pH 8.5, 400 rpm. Hematoxylin and eosin staining; 40X.

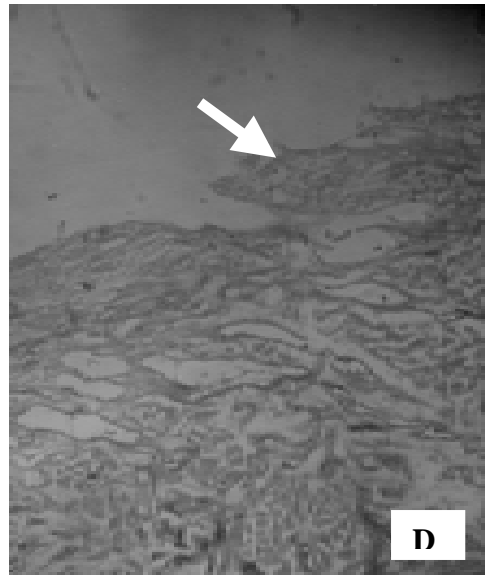
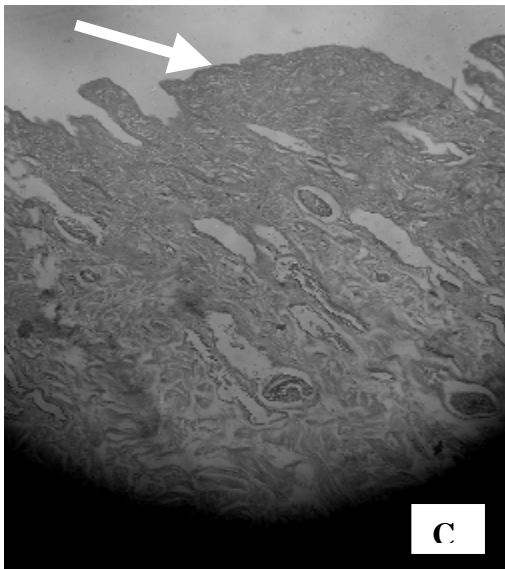
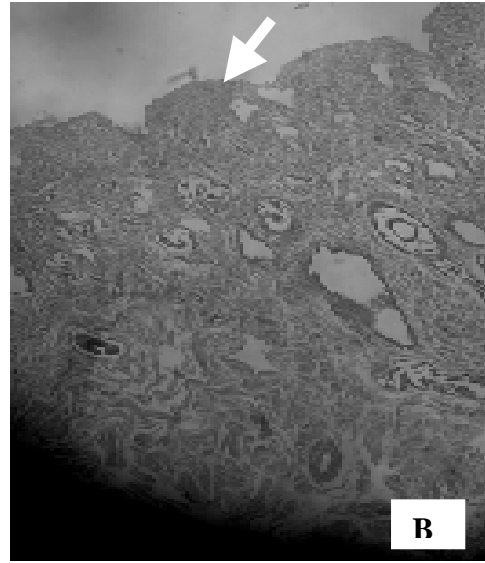
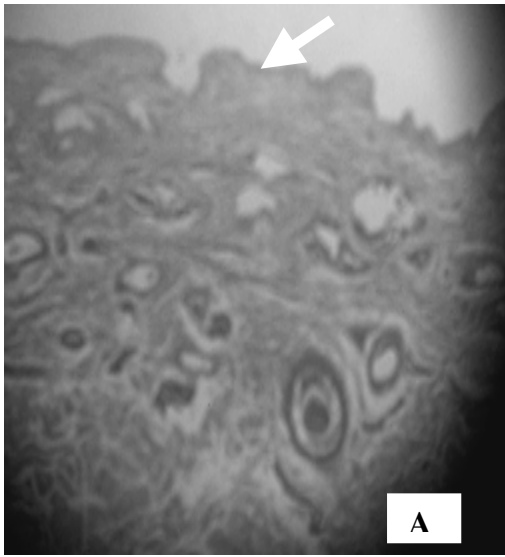


Figure 8: Bovine skin treatment with *B. polyfermenticus* GR 01 culture supernatant. Arrow indicates the epidermal zone, which disintegrated almost completely in the presence of culture supernatant. Sections of the root sheaths incubated in (A) Control, water-treated skin; (B) Treated skin with culture supernatant – 24 h incubation; (C) 36 h incubation; (D) 48 h incubation are shown. Incubation conditions: 37°C, pH 8.5, 400 rpm. Hematoxylin and eosin staining; 40X.